

# Model JCK-5C

## Outdoor Current Transformer 15.5 kV, 110 kV BIL, 5 to 1,200 A Range

### Application

Designed for outdoor service; suitable for operating meters, instruments, relays and control devices.

### Weight & Dimensions

Height: 14.55"

Depth: 12.37"

Width: 10.88"

Weight (Approximate).....40 lbs

### Insulation Level

15.5 kV; BIL: 110 kV per C57.13

### Frequency

60 Hz

### General Information

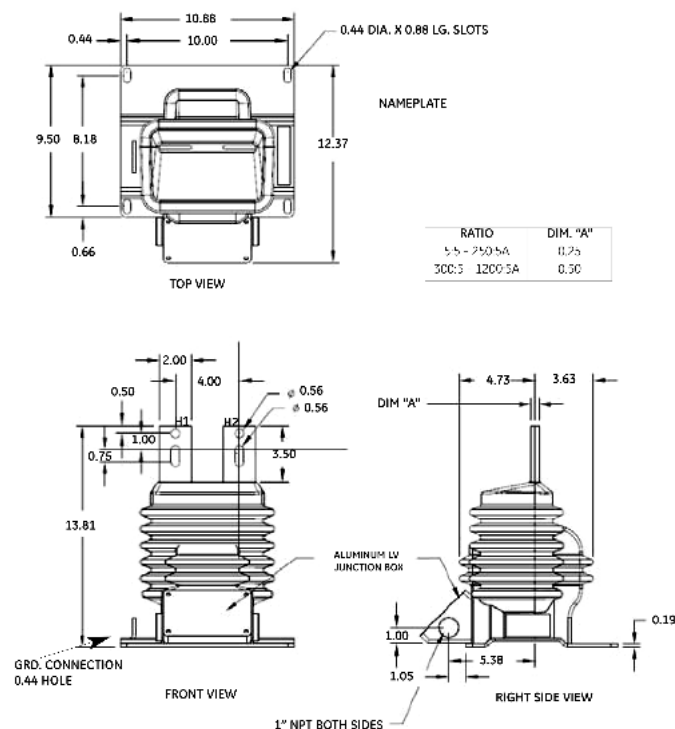
JCK-5C are manufactured in GE's Clearwater, FL. plant utilizing state-of-the-art Automated Pressure Gelation (APG) process and Hydrophobic Cycloaliphatic Epoxy (HCEP) for the entire line of outdoor current transformers. Insulation levels meet or exceed those specified in IEEE C57.13. Dimensions meet IEEE C12.11. Superior designs, HCEP epoxy, and the APG process are combined to produce the highest quality and reliability available in the industry for outdoor applications.



### Unit Selection Model JCK-5C

Catalog Number	Current Ratio	Relay Class 60 Hz	Metering Class 60 Hz	Rating Factor
Single Ratio Type JCK-5C 15 kV, 110 kV BIL				
755C152001	5:5	C40	0.3 B-0.5	3.0
755C152002	10:5	C40	0.3 B-0.5	3.0
755C152003	15:5	C40	0.3 B-0.5	3.0
755C152004	20:5	C40	0.3 B-0.5	3.0
755C152005	25:5	C40	0.3 B-0.5	3.0
755C152006	30:5	C40	0.3 B-0.5	3.0
755C152007	40:5	C40	0.3 B-0.5	3.0
755C152008	50:5	C40	0.3 B-0.5	3.0
755C152009	75:5	C40	0.3 B-0.5	3.0
755C152010	100:5	C40	0.3 B-0.5	3.0
755C152011	150:5	C40	0.3 B-0.5	3.0
755C152012	200:5	C40	0.3 B-0.5	3.0
755C152013	300:5	C40	0.3 B-0.5	3.0
755C152014	400:5	C40	0.3 B-0.5	3.0
755C152015	600:5	C40	0.3 B-0.5	2.0
755C152016	800:5	C40	0.3 B-0.5	1.5
755C152017	1,000:5	C40	0.3 B-0.5	1.2
755C152018	1,200:5	C40	0.3 B-0.5	1.0

## JCK-5C - Dimensions



### General Construction

Insulation - Hydrophobic Cycloaliphatic Epoxy (HCEP)  
 Baseplate - Heavy gage marine grade aluminum  
 Conduit box - Cast aluminum, removable, 1" threaded hubs  
 Nameplate - Anodized aluminum  
 Mounting - Horizontal, Vertical, Inverted

### HCEP Resin Features

Ideal for outdoor applications  
 Excellent water repellent characteristics  
 High mechanical properties  
 Excellent dielectric properties - stable in outdoor humid conditions  
 Enhanced thermal cycle resistance  
 High resistance to erosion from ultra violet (UV) radiation  
 High tracking and arc resistance  
 Extended service life

### Connection Diagram

Available in multiple configurations up to and including: Double ratio with tap on the secondary winding

