

Voltage Transformer

Model 460F & FF

REGULATORY AGENCY APPROVALS



Manufactured to meet the requirements of ANSI/IEEE C57.13.
Classified by U.L. in accordance with IEC 44-1



FREQUENCY:
60 Hz.

**STANDARD
SECONDARY VOLTAGE:**
120 Volts

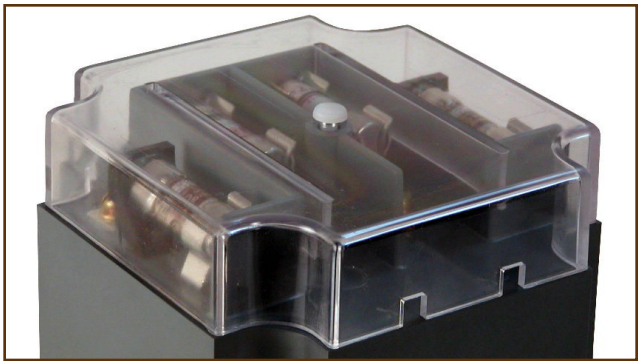
INSULATION LEVEL:
600 Volt, 10 kV BIL full wave.

ACCURACY CLASS:
0.6 W, 1.2 X at 60 Hz.

THERMAL RATING:
150 VA at 30°C. amb., 100 VA at 55°C. amb.

Terminals are brass screws No. 8-32
with one lockwasher, flatwasher.

Approximate weight 7.75 lbs.



Clear Plastic Cover

CATALOG NUMBER		VOLTAGE RATING	TURNS RATIO	REC. PRIMARY FUSE RATING
PRIMARY FUSES ONLY	PRIMARY AND SECONDARY FUSES			
460—069F	460—069FF	69.3:120	0.58:1	5.0
460—120F	460—120FF	120:120	1:1	4.0
460—208F	460—208FF	208:120	1.73:1	2.0
460—240F	460—240FF	240:120	2:1	2.0
460—277F	460—277FF	277:120	2.31:1	2.0
460—288F	460—288FF	288:120	2.4:1	1.5
460—300F	460—300FF	300:120	2.5:1	1.5
460—346F	460—346FF	346:120	2.88:1	1.5
*460—480F	*460—480FF	*480:120	4:1	1.0
*460—600F	*460—600FF	*600:120	5:1	0.75

Model 460F & FF

- The core and coil assembly is encased in a thermoplastic shell and filled with resin.
- These transformers are designed for operation line-to-line. They may also be operated line-to-ground or line-to-neutral at reduced voltage, (58% of rated volts).
- It is desirable to use a 1.6 amp BBS type or equal fuse in the secondary to protect the transformer.
- With two exceptions these transformer are ANSI C57.13 group 1. Those marked * are group 2.
- Primary fuses are class CC rejection type.
- Models designed specifically for 50Hz operation are available with reduced performance. Consult factory for details.
- This page contains a circle diagram for the estimation of the errors for other than rated burdens.

VOLTAGE TRANSFORMER CIRCLE DIAGRAM
THIS GRAPH IS DRAWN FOR A 60Hz 0.6 P.F. SYSTEM LOAD

