

Current Transformer Model 309MR

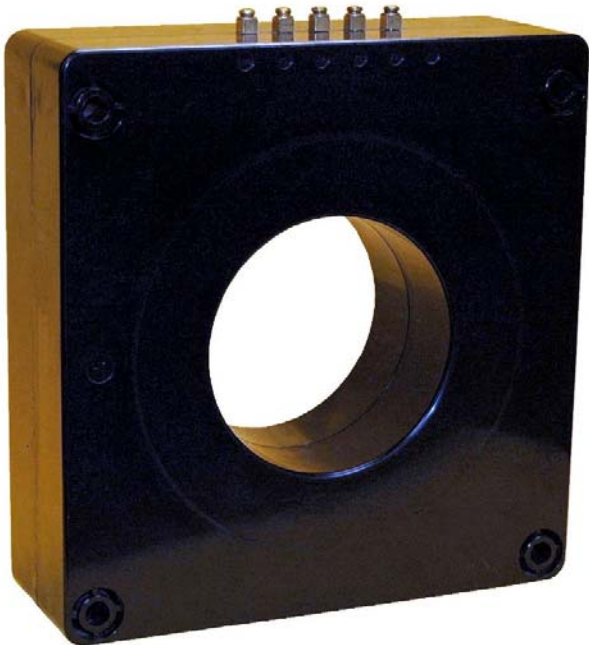
Window Diameter 5.75"

REGULATORY AGENCY APPROVALS



Manufactured to meet the requirements of ANSI/IEEE C57.13.
Classified by U.L. in accordance with IEC 44-1

Multi-Ratio



APPLICATION:

Relaying.

FREQUENCY:

50-400 Hz.

INSULATION LEVEL:

600 Volts, 10 kV BIL full wave.

Terminals are brass screws No. 10-32 with one flatwasher and lockwasher.

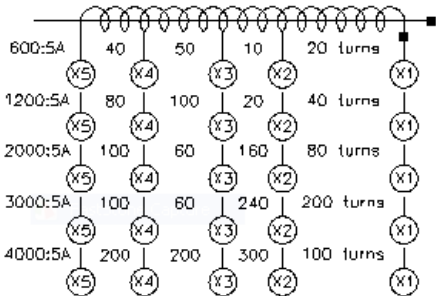
The transformer winding is arranged so that the turns are fully distributed between all tops.

Order mounting bracket kit 0221B01525 separately.

Approximate weight 62 lbs.

Excitation data available upon request.

CATALOG NUMBER	RELAY CLASS	CONTINUOUS THERMAL RATING FACTOR	
		@ 30°C	@ 55°C
309-601MR	C200	2.0	2.0
309-122MR	C400	2.0	1.5
309-202MR	C800	1.5	1.0
309-302MR	C800	1.0	0.8
309-402MR	C800	1.0	0.8



CONNECTION DIAGRAM

Model 309MR

