

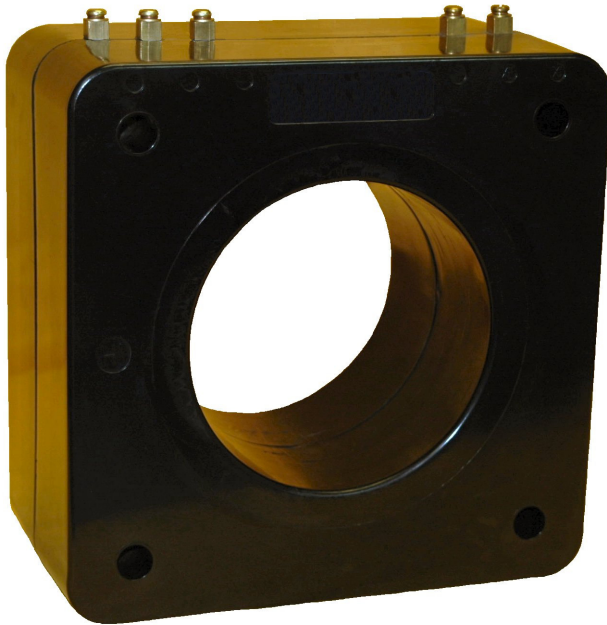
Window Diameter 5.50"

REGULATORY AGENCY APPROVALS



Manufactured to meet the requirements of ANSI/IEEE C57.13.
Classified by U.L. in accordance with IEC 44-1

Multi-Ratio



APPLICATION:

Relaying.

FREQUENCY:

50-400 Hz.

INSULATION LEVEL:

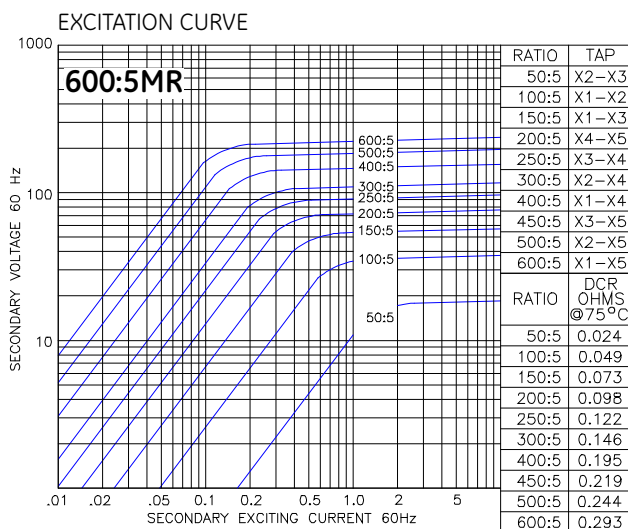
600 Volts, 10 kV BIL full wave.

Terminals are brass screws No. 10-32 with one flatwasher and lockwasher.

The transformer winding is arranged so that the turns are fully distributed between all taps.

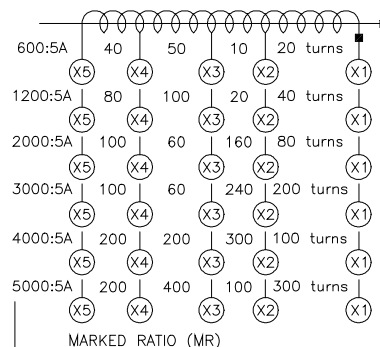
Order mounting bracket kit 0221B01528 separately.

Approximate weight 50 lbs.

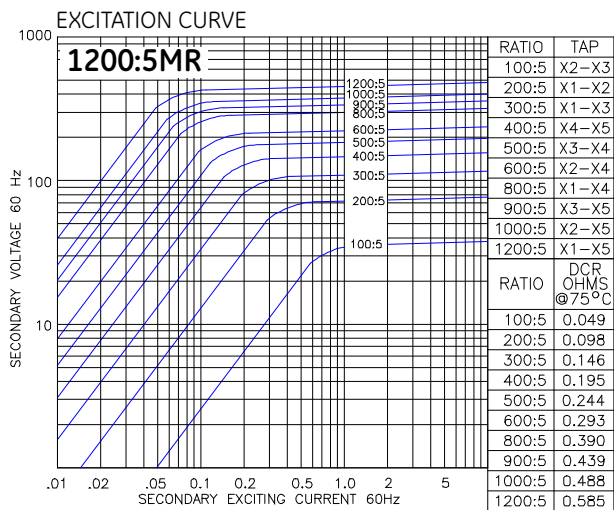


Model 137-601MR

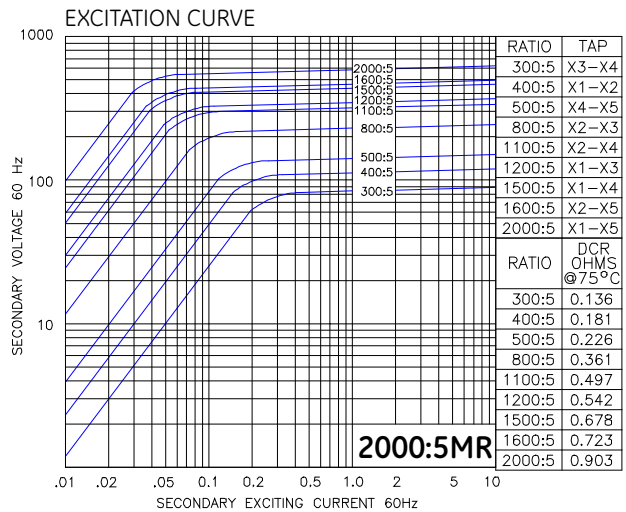
CATALOG NUMBER	RELAY CLASS	CONTINUOUS THERMAL RATING FACTOR	
		@ 30 °C	@ 55 °C
137—601MR	C200	2.0	2.0
137-122MR	C400	2.0	1.5
137-202MR	C400	1.5	1.0
137-302MR	C400	1.33	1.0
137-402MR	C400	1.0	0.8
137-502MR	C400	0.6	0.3



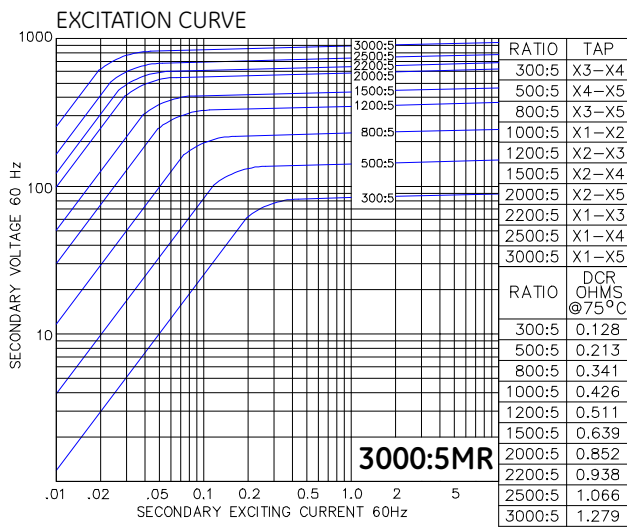
Model 137MR



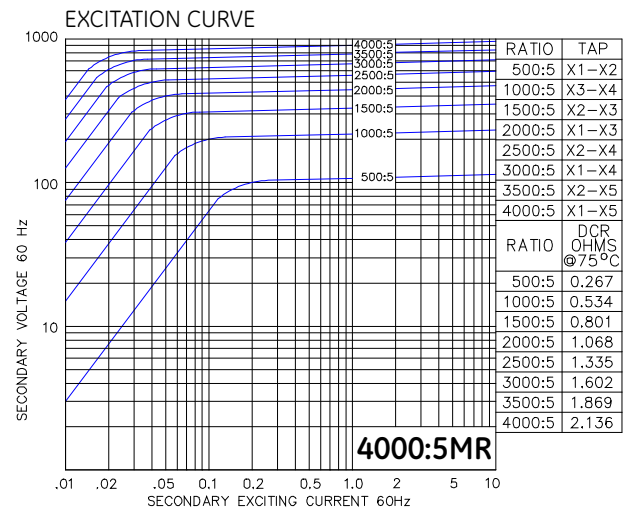
Model 137-122MR



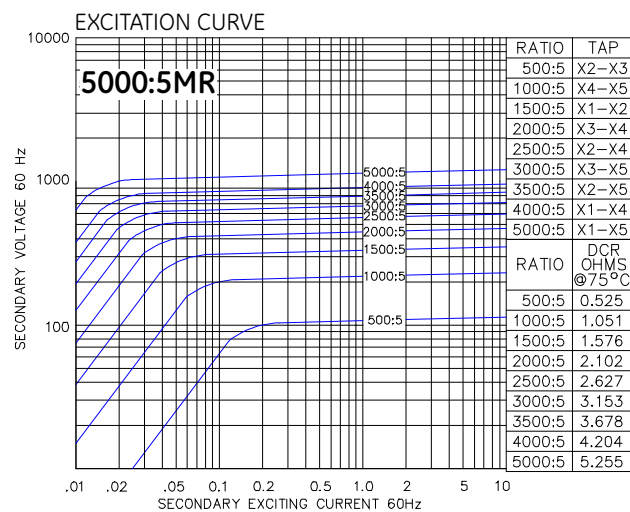
Model 137-202MR



Model 137-302MR



Model 137-402MR



Model 137-502MR

