

# Current Transformer

## Models 595 & 596 Zero Sequence CT

Window Sizes 4.56"x 13.44", 4.56"x 17.63"

### Cast Resin Construction



**APPLICATION:**  
Zero-Sequence

**FREQUENCY:**  
50-400 Hz.

**INSULATION LEVEL:**  
600 Volts, 10 kV BIL full wave.

**CONTINUOUS THERMAL  
CURRENT RATING FACTOR:**  
2.0 at 30°C. amb., 2.0 at 55°C. amb.

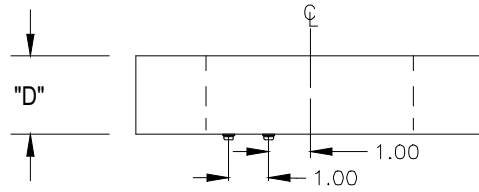
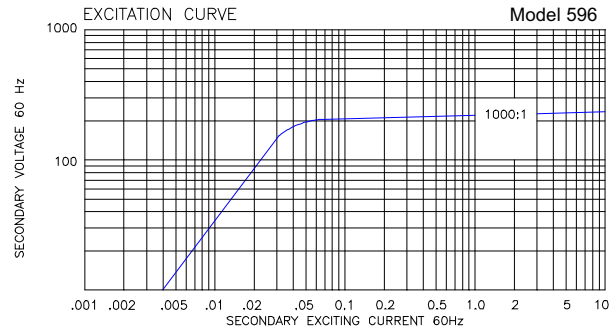
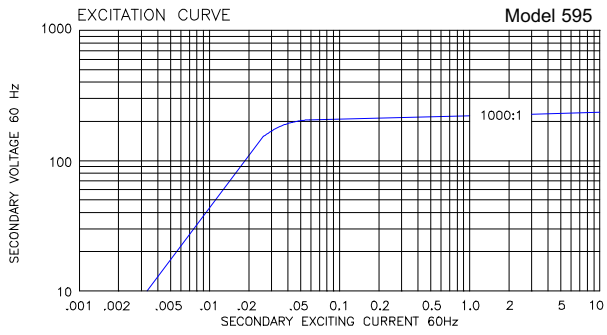
Terminals are brass screws No. 8-32 with lockwashers.

4 holes mounting system also available with brackets. Consult factory for details.

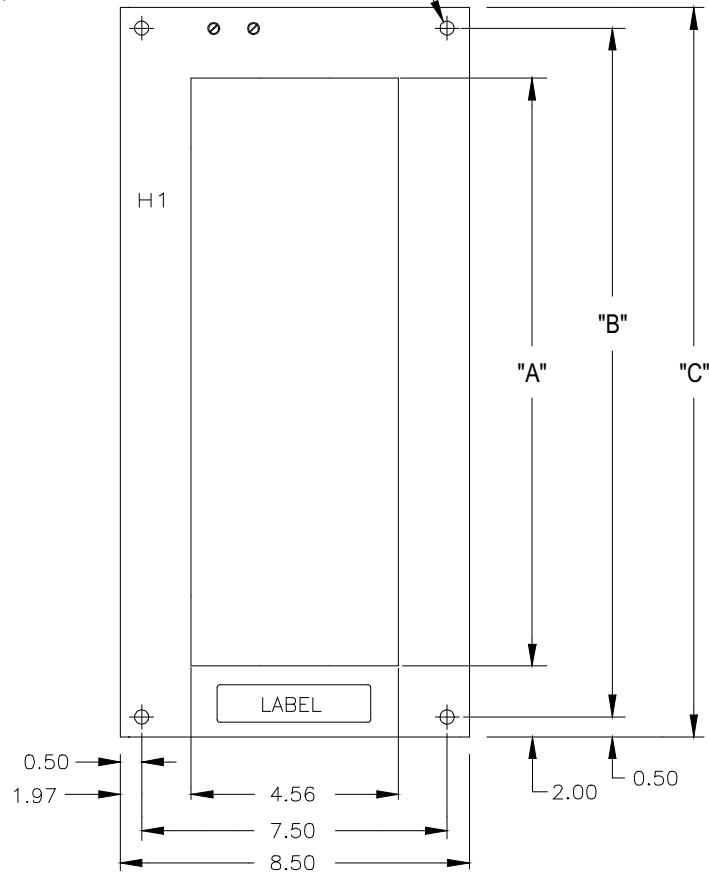
Approximate weight 24-29 lbs.

CATALOG NUMBER	CURRENT RATIO	SECONDARY WINDING RESISTANCE (OHMS @ 75°C)
595-102-1	1000:1	7.52
596-102-1	1000:1	7.52

# Model 595 & 596 Cast Resin Construction



- (4) HOLES  $\varnothing$  0.55 DIA - MODEL 595
- (4) HOLES  $\varnothing$  0.41 DIA - MODEL 596



MODEL	"A"	"B"	"C"	"D"
595	13.44	16.50	17.50	2.00
596	17.63	20.63	21.63	2.13