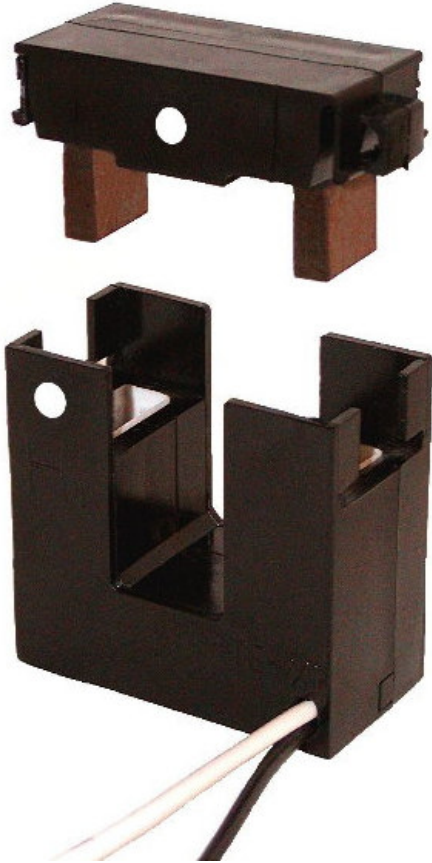


# Current Transformer Model 614 Split Core/Clamp On

Window Size 0.75" x 0.75"

REGULATORY AGENCY APPROVALS



**APPLICATION:**

For energy management systems and instrumentation equipment.

**FREQUENCY:**

50—400 Hz.

**INSULATION LEVEL:**

0.6 kV, BIL 10 kV full wave.

**CONSTRUCTION:**

The core and winding are encased in U.L. approved plastic.

**CONTINUOUS THERMAL  
CURRENT RATING FACTOR:**

1.33 at 30°C. amb., 1.0 at 55°C. amb.

Flexible leads are UL 1015, 105°C, #18 AWG, 36" long unless otherwise specified.

Approximate Weight 0.4 lbs.

CATALOG NUMBER	CURRENT RATIO	ACCURACY	BURDEN
614-101-0.1	100:0.1	1%	5 ohm
614-201-0.1	200:0.1	1%	5 ohm

# Model 614 Split Core/Clamp On

This transformer is designed for assembly to an existing electrical installation without the need for dismantling the primary bus or cables.

**Caution:**

Proper safety precautions must be followed during installation by a trained electrician. Never install while bus is energized.

The current transformer must have its secondary terminals short circuited or the burden connected, before energizing the primary circuit.

