

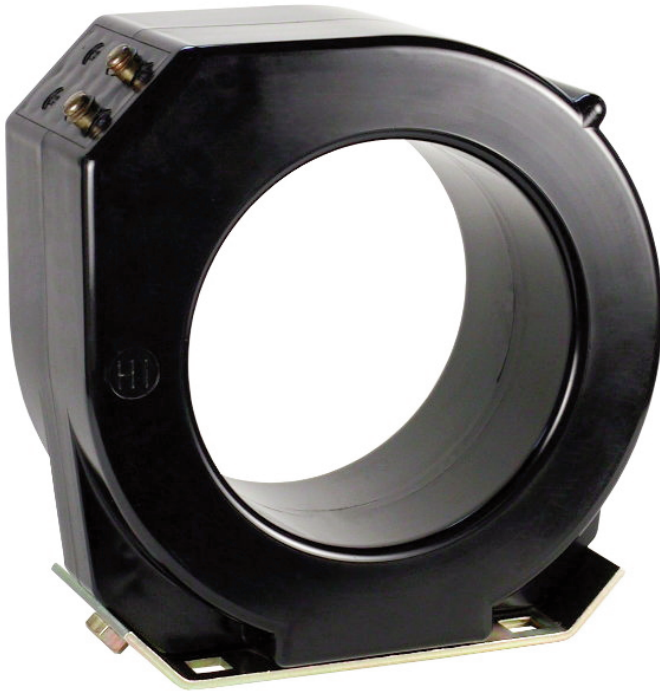
# Current Transformer Model 790

Window Diameter 5.00"

REGULATORY AGENCY APPROVALS



Manufactured to meet the requirements of ANSI/IEEE C57.13.  
Classified by U.L. in accordance with IEC 44-1



**APPLICATION:**  
Relaying and metering.

**FREQUENCY:**  
50-400 Hz.

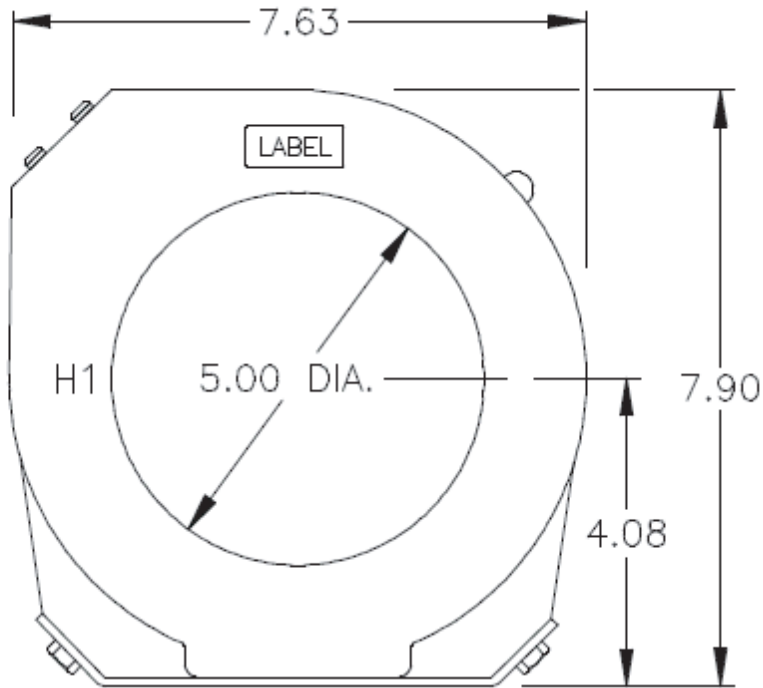
**INSULATION LEVEL:**  
0.6 kV, BIL 10 kV full wave.

Secondary terminals are brass screws No. 10-32 with one flatwasher, and lockwasher.

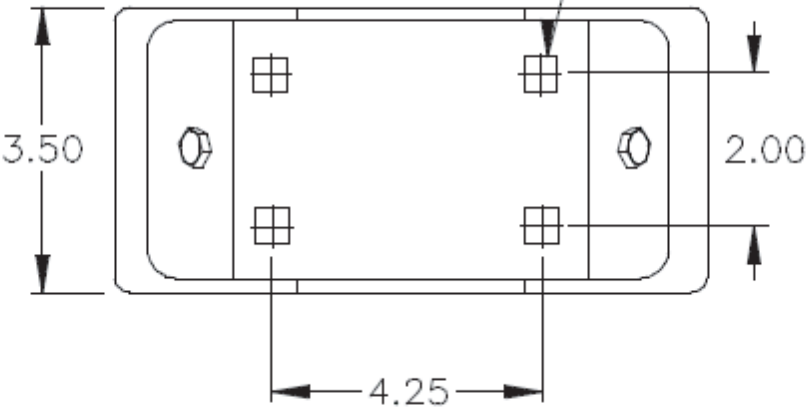
Approximate weight 15 lbs.

CATALOG NUMBER	CURRENT RATIO	RELAY CLASS	ANSI METERING CLASS AT 60HZ					SECONDARY WINDING RESISTANCE (OHMS @ 75°C)	CONTINUOUS THERMAL RATING FACTOR @ 30°C.
			B0.1	B0.2	B0.5	B0.9	B1.8		
790-801	800:5	C100	0.3	0.3	0.3	0.3	0.3	0.310	1.5
790-102	1000:5	C100	0.3	0.3	0.3	0.3	0.3	0.388	1.5
790-122	1200:5	C100	0.3	0.3	0.3	0.3	0.3	0.465	1.5
790-152	1500:5	C100	0.3	0.3	0.3	0.3	0.3	0.427	1.5
790-162	1600:5	C100	0.3	0.3	0.3	0.3	0.3	0.455	1.5
790-202	2000:5	C100	0.3	0.3	0.3	0.3	0.3	0.569	1.5
790-252	2500:5	C100	0.3	0.3	0.3	0.3	0.3	0.891	1.0
790302	3000:5	C100	0.3	0.3	0.3	0.3	0.3	1.68	0.8

Model 790



BASEPLATE HAS  
(4) 0.47 SQUARE HOLES  
FOR CAPTIVE NUTS



(BOTTOM VIEW)