

# Models JCB-3/JCB-4/JCB-5

Indoor Current 5,000 V to 15,000 V, BIL 60 kV to 110 kV  
600 A to 4,000 A, 5.56" Window 50/60 Hz

## Application

Designed for indoor service; suitable  
for operating meters, relays and  
control devices.

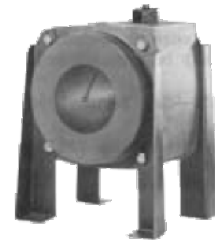
## Weight - Shipping/Net

(approximate, in pounds)  
Transformer, without base;  
JCB-3, JCB-4 95/85 lbs  
Transformer without base;  
JCB-5 120/110 lbs

## Reference Drawings

Accuracy Curves at 60 Hz:  
1,200:5 A ..... 9689241075  
1,500:5 A ..... 9689241076  
2,000:5 A ..... 9689241078  
3,000:5 A ..... 9689241080  
4,000:5 A ..... 9689241081

Excitation Curves:  
1,200:5 ..... 9689241139  
1,500:5 ..... 9689241140  
2,000:5 ..... 9689241142  
3,000:5 ..... 9689241144  
4,000:5 ..... 9689241145  
Outline Drawings:  
JCB-3 Transformer ..... 9688571  
JCB-4 Transformer ..... 9689745  
JCB-5 Transformer ..... 9688572  
Wiring Diagram ... refer to page 41, figure 3



JCB-3 Transformer



JCB-5 Transformer



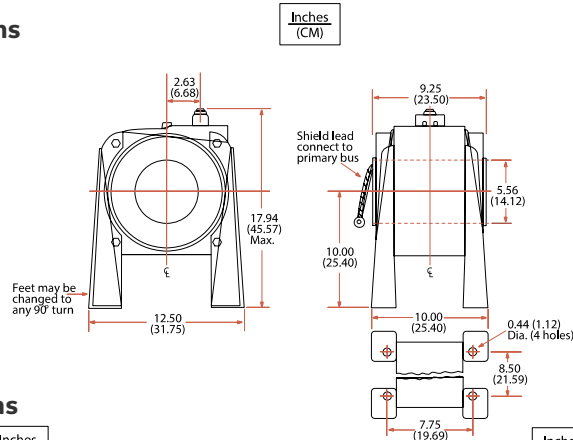
JCB-4 Transformer

## JCB-3/JCB-4/JCB-5

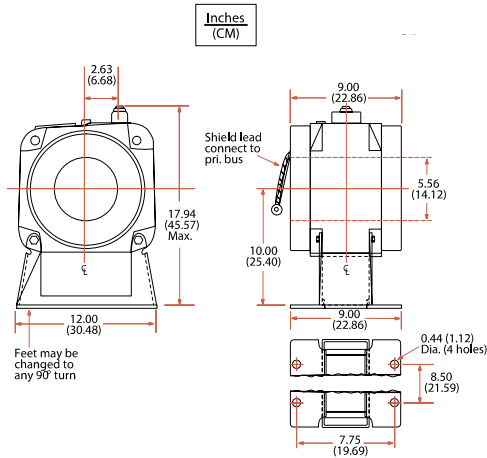
Current Ratio (in Amps) Pri : Sec	ANSI Accuracy Class, 60 Hz				Continuous Thermal Current Rating Factor		1-Sec. Thermal Limit Amperes	Catalog Number		
	Meter Class, Burden			Relay Class	@ 30 °C Amb.	@ 55 °C Amb.		JCB-3 5,000 V BIL 60 kV	JCB-4 8,700 V BIL 75 kV	JCB-5 15,000 V BIL 110 kV
	B-0.1, B-0.2, B-0.5	B-1	B-2							
1,200:5	0.3	0.3	0.3	C200	1.33	1.0	88,800	753X021008	754X021008	755X021008
1,500:5	0.3	0.3	0.3	C200	1.33	1.0	111,000	753X021009	754X021009	755X021009
2,000:5	0.3	0.3	0.3	C400	1.33	1.0	148,000	753X021011	754X021011	755X021011
3,000:5	0.3	0.3	0.3	C400	1.33	1.0	282,000	753X021013	754X021013	755X021013
4,000:5	0.3	0.3	0.3	C200	1.33	1.0	296,000	753X021014	754X021014	755X021014
600/1,200:5	0.3	0.6	---	C100	2.0	1.5	88,800	753X021016	754X021016	755X021016
	0.3	0.3	0.3	C200	1.33	1.0	88,800			
750/1,500:5	0.3	0.3	0.6	C100	2.0	1.5	111,000	753X021017	754X021017	755X021017
	0.3	0.3	0.3	C200	1.33	1.0	111,000			
1,000/2,000:5	0.3	0.3	0.6	C200	2.0	1.5	148,000	753X021018	754X021018	755X021018
	0.3	0.3	0.3	C400	1.33	1.0	148,000			
1,500/3,000:5	0.3	0.3	0.3	C200	2.0	1.5	282,000	753X021019	754X021019	755X021019
	0.3	0.3	0.3	C400	1.33	1.0	282,000			
2,000/4,000:5	0.3	0.3	0.3	C100	2.0	1.5	296,000	753X021020	754X021020	755X021020
	0.3	0.3	0.3	C200	1.33	1.0	296,000			

## Models JCB-3, JCB-4 & JCB-5 Dimensions

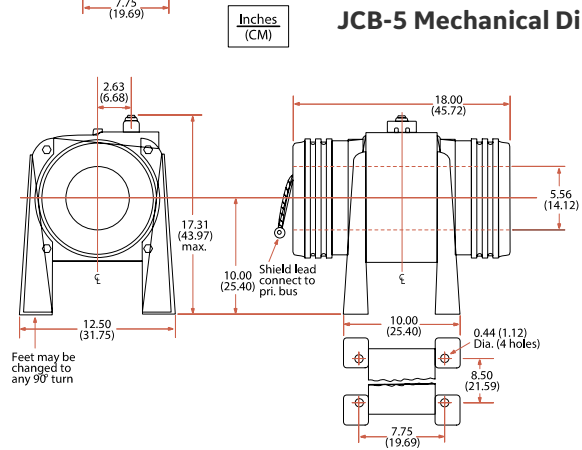
### JCB-3 Mechanical Dimensions



### JCB-4 Mechanical Dimensions



### JCB-5 Mechanical Dimensions



### Construction and Insulation

Please refer to General Product Information, items 1.2 and 1.8.

### Core

Please refer to General Product Information, item 2.2.

### Primary Winding

Please refer to General Product Information, item 3.4.

### "Pig Tail" Connection

Please refer to General Product Information, item 3.13.

### Secondary Winding

Please refer to General Product Information, item 3.4.

### Terminals

Please refer to General Product Information, item 4.16.

### Polarity

Please refer to General Product Information, item 7.2.

### Baseplate and Mounting

Please refer to General Product Information, item 5.11.

### Nameplate

Please refer to General Product Information, item 6.3.

### Maintenance

Please refer to General Product Information, item 10.1 and pages 24-27.

### Mechanical Rating

Mechanical limits are omitted since, if bar-primary-type transformers are properly installed, their mechanical strength is nearly unlimited.