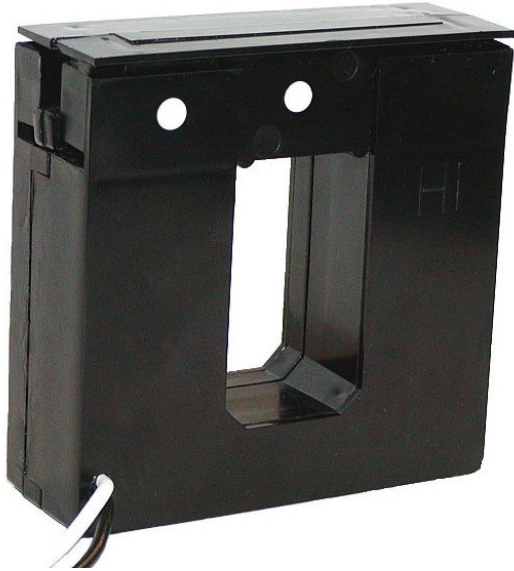


Current Transformer Model 616 Split Core/Clamp On

Window Size 1.31" x 2.16"

REGULATORY AGENCY APPROVALS



APPLICATION:

For energy management systems and instrumentation equipment.

FREQUENCY:

50-400 Hz.

INSULATION LEVEL:

0.6 kV, BIL 10 kV full wave.

CONSTRUCTION:

The core and winding are encased in U.L. approved plastic.

CONTINUOUS THERMAL

CURRENT RATING FACTOR:

1.33 at 30°C. amb., 1.0 at 55°C. amb.

Flexible leads UL 1015, 105°C, #16 AWG, 36" long unless otherwise specified.

Approximate Weight 1.2 lbs.

CATALOG NUMBER	CURRENT RATIO	BURDEN	ACCURACY AT 60 HZ
616-201	200:5	2VA	3 %
616-401	400:5	5VA	1 %
616-601	600:5	5VA	1 %
616-801	800:5	5VA	1 %
616-201-1	200:1	1.5VA	1 %
616-401-1	400:1	5VA	1 %
616-601-1	600:1	5VA	1 %
616-801-1	800:1	5VA	1 %
616-201-0.1	200:0.1	5 ohms	1 %
616-401-0.1	400:0.1	5 ohms	1 %
616-601-0.1	600:0.1	5 ohms	1 %
616-801-0.1	800:0.1	5 ohms	1 %

Model 616 Split Core/Clamp On

This transformer is designed for assembly to an existing electrical installation without the need for dismantling the primary bus or cables.

Caution:

Proper safety precautions must be followed during installation by a trained electrician. Never install while bus is energized.

The current transformer must have its secondary terminals short circuited or the burden connected, before energizing the primary circuit.

5

